



湖南中医药大学

HUNAN UNIVERSITY OF CHINESE MEDICINE

2026

湖南中医药大学
国际学生招生简章

HUNAN UNIVERSITY OF CHINESE MEDICINE
ENROLLMENT GUIDE FOR
INTERNATIONAL STUDENT

湖南中医药大学国际学生招生简章

INTERNATIONAL STUDENT
ENROLLMENT GUIDE FOR
CHINESE MEDICINE
HUNAN UNIVERSITY OF

2026



湖南中医药大学

HUNAN UNIVERSITY OF CHINESE MEDICINE

ABOUT CHANGSHA

长沙简介

长沙又名星城，常住人口约1061万，是湖南省的政治、经济、文化中心。她不仅是一座有着3000多年历史的文化名城，更是一座充满现代活力的国际都市。长沙具有得天独厚的地理优势，拥有便利的交通和物流，是中国沿海与内陆地区的中部枢纽。2019年起，中非经贸博览会永久落户湖南长沙。大众传媒和电视娱乐产业也很发达，著名的“汉语桥”世界大学生中文比赛和金鹰电视艺术节在这里举办。

长沙经济蓬勃发展，交通便利，是理想的宜居城市。这里绿树成荫，蓝湖遍地，风景如画，连续十年荣获最具幸福感城市。





WHY STUDY AT HNUCM

大学简介

湖南中医药大学坐落于中国历史文化名城长沙，是湖南省重点建设本科院校，全国首批设立国家级重点学科的高校，全国首批招收博士研究生、留学生及港澳台学生的中医药院校。现有含浦、东塘两大校区，占地面积1018亩。

学校下设16个本科教学学院，15所附属医院（2所直属附属医院），27所教学医院。开设34个本科专业，涵盖医、理、工、管、文、教等6大学科门类。现有博士后科研流动站3个，一级学科博士学位授权点3个，二级学科博士学位授权点24个，博士专业学位授权点1个；一级学科硕士学位授权点9个，二级学科硕士学位授权点70个，硕士专业学位授权点10个。现有专任教师1500余人，博士生导师204人，硕士生导师1174人。

学校拥有60余个国家和地区的生源，留学生规模居湖南省高校前列。在韩国圆光大学建设全球首家研究型中医孔子学院；拥有湖南省唯一一家国家中医药服务出口基地；在巴基斯坦、柬埔寨、迪拜、津巴布韦、马达加斯加、埃及建立中医药中心，与埃及开罗大学签署“湖南-开罗中医药中心”合作项目协议，标志着中国在埃及首个综合性中医药中心的正式启航；与巴基斯坦卡拉奇大学共建“中药民族药物创新发展国际实验室”，巴基斯坦Atta院士在中国首个外籍院士工作站落户学校，助推“银黄清肺胶囊”“猴头健胃灵消食片”“妇科千金片”等三种中成药在巴基斯坦完成临床试验；与伊斯兰合作组织科学与技术合作部长级常设委员会（COMSTECH）签署多项合作协议；打造教育部“万人计划—内地与港澳师生交流项目”、国台办重点对台交流项目“湖湘中医文化之旅”等品牌项目，荣获“全国重点对港教育交流项目高校”“国家重点对台交流项目高校”称号。



WHAT CAN I STUDY

专业设置

01 全日制本科生项目 (中文授课)

5年制

中医学
 中医养生学
 中西医临床医学
 临床医学
 口腔医学
 针灸推拿学
 医学影像学
 中医儿科学
 中医骨伤科学
 眼视光医学
 中医康复学

4年制

英语
 商务英语
 护理学
 康复治疗学
 运动康复
 医学检验技术
 公共事业管理
 中药学
 药学
 药物制剂
 应用心理学
 中药资源与开发
 制药工程
 生物制药
 食品科学与工程
 医学信息工程
 计算机科学与技术
 人工智能
 医疗保险
 养老服务管理

02 全日制硕士研究生项目 (中文授课)

3年制

招生学院/医院	招生专业	研究方向	导师
002中医学院	100501中医基础理论	01中医治则治法研究	邓奕辉 (DENG YIHUI)
	100502中医临床基础	01仲景杂病证治思想及经方应用研究	肖碧跃 (XIAO BIYUE)
		02《温病》治则治法及心脑血管疾病防治研究	李鑫辉 (LI XINHUI)
		03《内经》临床病症及治则治法研究	李花 (LI HUA)
		04《伤寒论》学术思想与经方应用研究	谢雪姣 (XIE XUEJIAO)
	100505中医诊断学	01心脑血管病诊治规律与证本质研究	莫颖莉 (MO YINGLI)
		02智能诊疗理论与方法	梁昊 (LIANG HAO)
		03中医病证诊断及药物干预研究	李杰 (LI JIE)
	100522中医亚健康学	01中医体重管理模式探索及肥胖相关疾病防治研究	刘旺华 (LIU WANGHUA)
	003医学院	100100基础医学	01病理学与病理生理学
唐勤慧 (TUO QINHUI)			
004第一附属医院 (第一中医临床学院)	100511中医五官科学	01眼科	钱荣华 (QIAN RONGHUA)
	100800中药学	01中药药理毒理/中医药质量控制与安全评价	陈向东 (CHEN XIANGDONG)
		02中药学	刘红宇 (LIU HONGYU)
	100700药学	01药学	龙红萍 (LONG HONGPING)
	105701中医内科学	01中医药防治心脑血管疾病的研究	陈文明 (CHEN WENMING)
			郭纯 (GUO CHUN)
			刘建和 (LIU JIANHE)
			龙云 (LONG YUN)
			谢雪姣 (XIE XUEJIAO)
	105702中医外科学	02心血管内科	胡华 (HU HUA)
		03神经内科	张稳 (ZHANG WEN)
		04老年病科	易琼 (YI QIONG)
		05重症医学	袁轶峰 (YUAN YIFENG)
		01男性病科	朱文雄 (ZHU WENXIONG)
		02皮肤科	席建元 (XI JIANYUAN)
03乳腺外科		胡金辉 (HU JINHUI)	
04中医药防治男科疾病		周青 (ZHOU QING)	
05烧伤疮疡整形科		周志志 (ZHOU ZHONGZHI)	
			黄新灵 (HUANG XINLING)

招生学院/医院	招生专业	研究方向	导师
004第一附属医院(第一中医临床学院)	105703中医骨伤科学	01四肢关节科	邝高艳(KUANG GAOYAN) 严可(YAN KE)
	105706中医五官科学	01眼科	陈向东(CHEN XIANGDONG)
	105709中西医结合临床学院	01肿瘤科	田雪飞(TIAN XUEFEI)
			邓梨平(DENG LIPING)
	105900针灸	02神经外科	余文运(YU WENYUN)
			石文英(SHI WENYING)
005第二附属医院(第二中医临床学院)	100800中药学	01中药药效机制及特色中药制剂研究	邓桂明(DENG GUIMING)
	105701中医内科学	01心脑血管内科	李鑫辉(LI XINHUI)
105702中医外科学	01皮肤科	朱明芳(ZHU MINGFANG)	
		王真权(WANG ZHENQUAN)	
105703中医骨伤科学	01骨伤科	张申尧(ZHANG SHENYAO)	
105709中西医结合临床	01泌尿外科	周浩(ZHOU HAO)	
006针灸推拿与康复学院	100512针灸推拿学	01针灸治病临床与机理研究	刘密(LIU MI)
007中西医结合学院	100602中西医结合临床	01中西医结合防治肿瘤疾病研究	田雪飞(TIAN XUEFEI)
		02中西医结合防治外科疾病研究	刘钰(LIU YU)
008护理学院	101100护理学(学术学位)	01护理学	罗尧岳(LUO YAOYUE)
			陈偶英(CHEN OUYING)
			蒋小剑(JIANG XIAOJIAN)
			秦莉花(QIN LIHUA)
			潘晓彦(PAN XIAOYAN)
			李春艳(LI CHUNYAN)
	105400护理学(专业学位)	01护理学	吉彬彬(JI BINBIN)
			罗尧岳(LUO YAOYUE)
			陈偶英(CHEN OUYING)
			蒋小剑(JIANG XIAOJIAN)
			潘晓彦(PAN XIAOYAN)
			秦莉花(QIN LIHUA)
何娅娜(HE YANA)			
刘花艳(LIU HUAYAN)			
张湘彦(ZHANG XIANGYAN)			
李春艳(LI CHUNYAN)			
吉彬彬(JI BINBIN)			

招生学院/医院	招生专业	研究方向	导师
010药学院	100700药学	01药物化学	周旭东(ZHOU XUDONG)
			王炜(WANG WEI)
			李斌(LI BIN)
		02药剂学	刘文龙(LIU WENLONG)
			张喜利(ZHANG XILI)
			贺福元(HE FUYUAN)
	100800中药学	03药理学	覃丽(QIN LI)
			杜可(DU KE)
			余黄合(YU HUANGHE)
		01中药资源学	童巧珍(TONG QIAOZHEN)
			刘湘丹(LIU XIANGDAN)
			颜红(YAN HONG)
02中药药剂学	石继连(SHI JILIAN)		
	林丽美(LIN LIMEI)		
	夏伯候(XIA BOHOU)		
03中药炮制学	裴刚(PEI GANG)		
	李娟(LI JUAN)		
	周旭东(ZHOU XUDONG)		
04中药分析学	覃丽(QIN LI)		
	余黄合(YU HUANGHE)		
	杜可(DU KE)		
05中药有效成分及作用机制研究	李娟(LI JUAN)		
	周旭东(ZHOU XUDONG)		
	覃丽(QIN LI)		
06中药化学	余黄合(YU HUANGHE)		
	杜可(DU KE)		
	李娟(LI JUAN)		
01工业药学	周旭东(ZHOU XUDONG)		
	覃丽(QIN LI)		
	余黄合(YU HUANGHE)		
105500药学	02临床药学	杜可(DU KE)	
		李娟(LI JUAN)	
		周旭东(ZHOU XUDONG)	
012湖南省中医药研究院	105900针灸	01针灸推拿科	朱伟(ZHU WEI)
013中医药科学院(科技创新中心)	100601中西医结合基础	01心脑血管疾病中西医结合基础研究	梅志刚(MEI ZHIGANG)
	100602中西医结合临床	01中西医结合防治心脑血管疾病	梅志刚(MEI ZHIGANG)
		02中西医结合防治肺系疾病研究	李玲(LI LING)
	100700药学	01药理学	覃丽(QIN LI)
100800中药学	01中药药理学	覃双林(QIN SHUANGLIN)	
001人文与管理学院	1005Z7中医文化学	01中医跨文化传播	刘江(LIU JIANG)
	1007Z1医药经济与管理	01医药经济与政策	丁颖(DING YING)
		01医院卫生健康经济与管理	夏新斌(XIA XINBIN)
	125200公共管理(MPA)	02健康经济与政策	刘萍(LIU PING)
	045400应用心理	01应用心理学	夏新斌(XIA XINBIN)
017口腔医学院	105200口腔医学	01口腔全科学	张湘彦(ZHANG XIANGYAN)
			李明(LI MING)

03 全日制博士研究生项目 (中文授课)

3年制

招生学院/医院	招生专业	研究方向	导师
001人文与管理学院	100528中医管理学	01中医药经济与政策	夏新斌 (XIA XINBIN)
002中医学院	100501中医基础理论	01中医治则治法研究	邓奕辉 (DENG YIHUI)
	100502中医临床基础	01《温病》治则治法及心脑血管疾病防治研究	李鑫辉 (LI XINHUI)
		02《伤寒论》学术思想与经方应用研究	谢雪皎 (XIE XUEJIAO)
	100505中医诊断学	01心脑血管病诊治规律与证本质研究	刘旺华 (LIU WANGHUA)
		02中医智能辅助诊断理论与方法	梁昊 (LIANG HAO)
	100529中医护理学	03心血管疾病的证候本质及中药干预研究	李杰 (LI JIE)
		01肿瘤疾病的中医智能诊断与管理研究	罗尧岳 (LUOYAOYUE)
		02脑血管疾病中医护理及中药干预研究	秦莉 (QIN LI)
		03脑血管疾病中医护理及中药干预研究	陈佩英 (CHEN PEIYING)
	004第一附属医院 (第一中医临床学院)	100507中医外科学	04精神心理与慢病管理
105701中医内科学 (专业学位)		01中医药防治皮肤病/中医药防治男科疾病	周青 (ZHOU QING)
		01中医药防治心脑血管疾病的研究	刘建和 (LIU JIANHE)
		02神经内科疾病的中医药防治研究	胡华 (HU HUA)
		03心脑血管疾病中医药防治及创新药物研究	张轶 (ZHANG YI)
105702中医外科学 (专业学位)		04 中医药防治心脑血管疾病的研究	谢雪皎 (XIE XUEJIAO)
105706中医五官科学 (专业学位)		01中医药防治皮肤病/中医药防治男科疾病	周青 (ZHOU QING)
	02中医药防治皮肤病的研究	席建元 (XI JIANYUAN)	
005第二附属医院 (第二中医临床学院)	105701中医内科学 (专业学位)	01眼科	陈向东 (CHEN XIANGDONG)
	105702中医外科学 (专业学位)	01中医药防治心脑血管疾病的研究	李鑫辉 (LI XINHUI)
		01皮肤科	朱明芳 (ZHU MINGFANG)
006针灸推拿与康复学院	100800中药学	02中医药防治肛肠疾病	王震权 (WANG ZHENQUAN)
	100512针灸推拿学	01中药药效机制及特色中药制剂研究	邓桂明 (DENG GUIMING)
007中西医结合学院	100601中西医结合基础	01针灸治病临床及作用机理的研究	刘密 (LIU MI)
		01中药和复方药效物质及其配伍原理和药效机制的研究/心脑血管疾病防治及血栓与止血的研究	梅志刚 (MEI ZHIGANG)
		02抗肿瘤中药成分筛选与靶向递送系统研究/肠道微生物与肿瘤发病机制及中西医结合防治	田雪飞 (TIAN XUEFEI)
	100602中西医结合临床 (学术学位)	03中西医结合防治感染性疾病研究	李玲 (LI LING)
		01抗肿瘤中药成分筛选与靶向递送系统研究/肠道微生物与肿瘤发病机制及中西医结合防治	田雪飞 (TIAN XUEFEI)
105709中西医结合临床 (专业学位)	02中药和复方药效物质及其配伍原理和药效机制的研究/心脑血管疾病防治及血栓与止血的研究	梅志刚 (MEI ZHIGANG)	
		01抗肿瘤中药成分筛选与靶向递送系统研究/肠道微生物与肿瘤发病机制及中西医结合防治	田雪飞 (TIAN XUEFEI)
		02口腔医学	李明 (LI MING)

招生学院/医院	招生专业	研究方向	导师
010药学院	100800中药学	01中药系统生物学及质量创新研究	林丽美 (LIN LIMEI)
		02天然药物研究与开发	王炜 (WANG WEI)
			李斌 (LI BIN)
		03中药制剂与质量	刘文龙 (LIU WENLONG)
		04心脑血管疾病的中药防治研究	唐勤慧 (TANG QINHUI)
		05中药药剂、药理与药性的现代化理论/技术与方法 (超分子化学) 研究	贺福元 (HE FUYUAN)
			覃丽 (QIN LI)
		06中药防治肿瘤及心血管疾病	刘湘丹 (LIU XIANGDAN)
07中药资源学	董巧珍 (DONG QIAOZHEN)		
013中医药科学院 (科技创新中心)	100800中药学	08中药有效成分及作用机制研究	裴刚 (PEI GANG)
		01中药防治肿瘤及心血管疾病	覃丽 (QIN LI)

04 全日制博士研究生项目 (英文授课)

3年制

招生学院/医院	招生专业	研究方向、导师及入学所需材料咨询境外学生招生办公室
010药学院	100800中药学	



APPLICATION REQUIREMENTS

申请要求

01 本科生

入学条件

- 1.非中国籍公民;
- 2.具有相当于中国高中毕业的学历;
- 3.年龄在18周岁以上, 30周岁以下;
- 4.身体健康。

所需材料

- 1.护照信息页复印件 (护照必须是在递交申请之日起6个月内有效的普通护照);
- 2.高中毕业证书及成绩单复印件, 语言为中文或英文; 如文件为非中文或英文, 则需提供翻译件并公证;
- 3.汉语水平证书 (HSK4级以上);
- 4.无犯罪记录证明 (6个月内有效);
- 5.体检表 (6个月内有效);
- 6.面试视频;
- 7.心理测评;
- 8.学校要求的其他文件。

02 硕士研究生

入学条件

- 1.非中国籍公民;
- 2.具有相当于中国大学本科以上学历;
- 3.年龄在18岁及以上;
- 4.有两名副教授以上的导师推荐;
- 5.身体健康。

所需材料

- 1.护照信息页复印件 (护照必须是在递交申请之日起6个月内有效的普通护照);
- 2.本科毕业证书、学位证书及成绩单复印件, 语言为中文或英文; 如文件为非中文或英文, 则需提供翻译件并公证;
- 3.汉语水平证书复印件 (HSK4级以上);
- 4.个人简历;
- 5.两封副教授以上专家学者推荐信;
- 6.研究计划;
- 7.无犯罪记录证明 (6个月内有效);
- 8.体检表 (6个月内有效);
- 9.面试视频;
- 10.心理测评;
- 11.学校要求的其他文件。



03 博士研究生

入学条件

- 1.非中国籍公民;
- 2.具有相当于中国硕士以上学历;
- 3.年龄在18岁及以上;
- 4.有两名副教授以上的导师推荐;
- 5.身体健康。

所需材料

- 1.护照信息页复印件（护照必须是在递交申请之日起6个月内有效的普通护照）；
- 2.硕士毕业证书、学位证书及成绩单复印件，语言为中文或英文；如文件为非中文或英文，则需提供翻译件并公证；
- 3.汉语水平证书复印件（HSK4级以上）；
- 4.个人简历；
- 5.两封副教授以上专家学者推荐信；
- 6.研究计划；
- 7.无犯罪记录证明（6个月内有效）；
- 8.体检表（6个月内有效）；
- 9.面试视频；
- 10.心理测评；
- 11.学校要求的其他文件。



04 语言生

入学条件

- 1.非中国籍公民;
- 2.具有相当于中国高中毕业的学历;
- 3.年龄在18周岁以上;
- 4.身体健康。

所需材料

- 1.护照信息页复印件（护照必须是在递交申请之日起6个月内有效的普通护照）；
- 2.高中毕业证书及成绩单复印件，语言为中文或英文；如文件为非中文或英文，则需提供翻译件并公证；
- 3.无犯罪记录证明（6个月内有效）；
- 4.体检表（6个月内有效）；
- 5.面试视频；
- 6.心理测评；
- 7.学校要求的其他文件。





收费标准

住宿费（根据具体情况、住宿条件调整）	
含浦校区三人间	2600元人民币/年
东塘校区双人间	6000元人民币/年
东塘校区单人间	10500元人民币/年

保险费	
费用	800元人民币/年

学费	
外国本科生	20,000元人民币/年
外国硕士研究生	23,000元人民币/年
外国博士研究生	32,000元人民币/年
外国语言生	15,000元人民币/年

居留许可办理费	
费用	约800元人民币/年

SCHOLARSHIPS 奖学金

01 湖南省“一带一路”沿线国家语言生奖学金

资助对象：国籍为“一带一路”国家的汉语语言生申请者。
资助标准：15000元/年（可覆盖学费、住宿费）。
资助时间范围：一学年。
评选标准：1.经线上面试选拔，择优录取；2.有一定汉语基础者优先。

02 湖南中医药大学国际教育学院招生奖学金

资助对象：报考我校本科（不含临床医学专业）硕士、博士的学生
资助标准：本科：11300元（可覆盖第一学年学费住宿费的50%）
 硕士：全额：25600元（可覆盖第一学年学费、住宿费）；
 半额：12800元（可覆盖第一学年学费、住宿费的50%）；
 博士：34600元（可覆盖第一学年学费、住宿费）
 第一学年发放每月3000元生活补助（共计发放12个月）
资助时间范围：第一学年。
评选标准：1.经线上面试选拔，择优录取；2.汉语水平优异者优先；3.学习中医类专业的本科学历申请者优先；
 4.科研成绩显著的研究生学历申请者优先。

03 湖南省国际学生学历生奖学金

资助对象：全日制本科生、硕士和博士国际学生。

资助标准：本科：15000元/年；硕士：20000元/年；博士：25000元/年。

资助时间范围：从第二学年开始。

评选标准：按照综合测评结果和课程学习成绩择优评选。

04 国际中文教师奖学金（一学期研修生）

资助对象：1.非中国籍人士；

2.对华友好，无违法犯罪记录，遵守中国政府的法律、法规和学校的规章制度；

3.身心健康，品学兼优；

4.有志于从事中文教育、教学及相关工作；

5.年龄为18-35周岁(统一以2026年9月1日计)。在职中文教师放宽至45周岁，本科奖学金申请者一般不超过25周岁。

资助标准：资助学费、住宿费，提供生活补助2500元/月、综合医疗保险费400元/人。

评选标准：1.具有HSK成绩（2年内有效）；2.有HSKK 成绩（2年内有效）者优先。

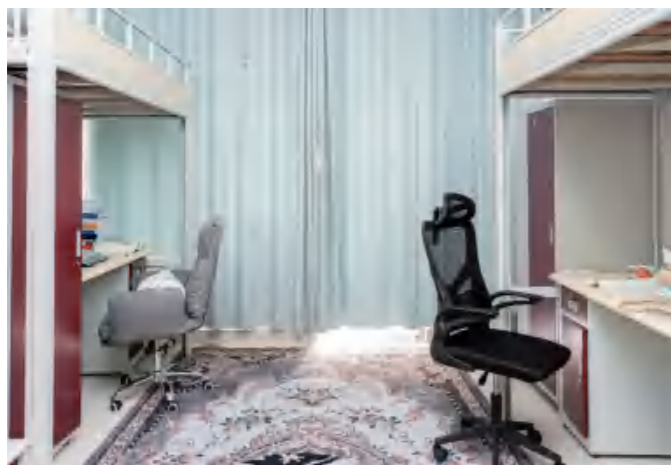
申请方式：通过所在国家孔子学院、HSK考点申请。



CAMPUS LIFE 校园生活



CAMPUS LIFE 校园生活



我校建有整栋留学生宿舍楼，房间配备空调、热水器，独立洗手间、阳台和基本生活家具。留学生楼实行24小时安保制度，楼内设施齐全，一楼有现代化教室、活动室、餐厅、会议室和咖啡吧等。



HOW TO APPLY 申请/联系方式

线上申请: <https://hnucm.at0086.cn/StuApplication/Login.aspx>

现场报名: 湖南省长沙市岳麓区学士路300号湖南中医药大学

(含浦校区) 国际教育学院招生办公室

申请时间: 2026年3月1日至6月15日

联系电话: 0086-0731-88458265

邮编: 410208

邮箱地址: ieizs@hnucm.edu.cn

学院官网: <https://gjyy.hnucm.edu.cn/>



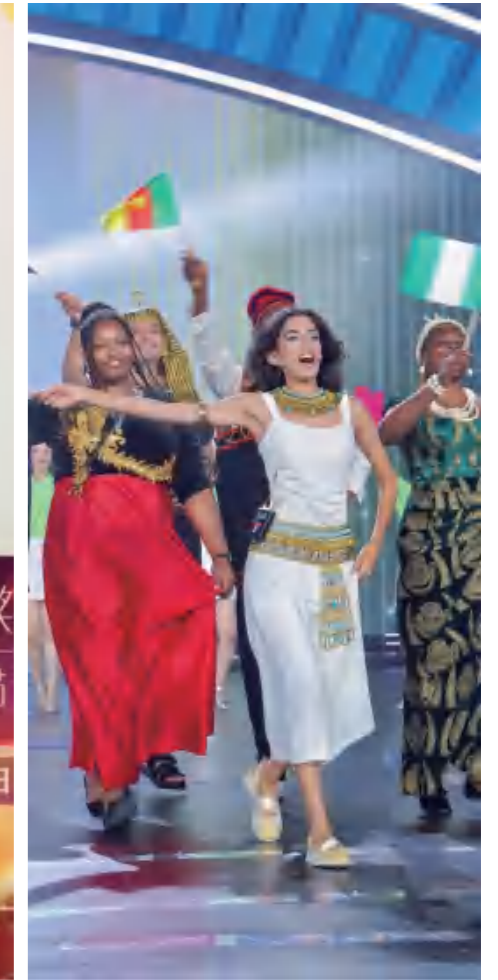
**2026 HUNAN UNIVERSITY OF CHINESE MEDICINE
ENROLLMENT GUIDE FOR INTERNATIONAL STUDENT**

2026·湖南中医药大学国际学生招生简章

ABOUT CHANGSHA

Changsha, also known as the Star City, has a population of about 10.61 million and is the political economic, and cultural center of Hunan Province. Changsha is not only a famous cultural city with a long-standing history of more than 3,000 years but also an international city full of modern dynamism. Changsha enjoys a favorable location advantage, convenient transportation, and logistics. It is the central link between the coastal areas and inland China. Since 2019, the China-Africa Economic and Trade Expo has been permanently held in Changsha, Hunan Province. Changsha also has a strong industry in mass media and TV entertainment. "Chinese Bridge" and "The Golden Eagle TV Festival" are held in Changsha.

Changsha is an ideal city for people to live in with easy access and a booming economy. Changsha has picturesque gardens covered by ever-green trees and blue lakes. In the past 10 years, Changsha has won awards as one of the happiest cities to live in.



WHY STUDY AT HNUCM

Hunan University of Chinese Medicine (HNUCM) is located in Changsha, a famous historical and cultural city in China. HNUCM is one of the key undergraduate institutions in Hunan Province, one of the first universities to set up national key disciplines, and one of the first Chinese Medicine universities to enroll doctoral students, international students as well as students from Hong Kong, Macao and Taiwan. There are two campuses, Hanpu and Dongtang, covering an area of 1018 mu.

The university has 16 undergraduate teaching colleges, 15 affiliated hospitals (2 directly affiliated hospitals), and 27 teaching hospitals. There are 34 undergraduate majors, covering 6 major disciplines, including medicine, science, engineering, management, literature, and education. There are 3 postdoctoral research stations, 3 first-level doctoral degree authorization points, 24 second-level doctoral degree authorization points, and 1 professional doctoral degree authorization point; 9 first-level master's degree authorization points, 70 second-level master's degree authorization points, and 10 professional master's degree authorization points. There are over 1500 full-time teachers, 204 doctoral tutors, and 1174 master's tutors.

The university boasts a stable enrollment of international students from over 60 countries and regions, ranking among the top institutions in Hunan Province for international student enrollment. It established the world's first research-oriented Confucius Institute for Traditional Chinese Medicine at Wonkwang University in South Korea and operates Hunan Province's sole National Traditional Chinese Medicine Service Export Base. It has established Traditional Chinese Medicine centers in Pakistan, Cambodia, Dubai, Zimbabwe, Madagascar, and Egypt. The signing of a cooperation agreement with the China University in Egypt for the "Hunan-Cairo Traditional Chinese Medicine Center" marks the official launch of China's first comprehensive Traditional Chinese Medicine center in Egypt. It jointly established the "International Laboratory for Innovation and Development of Traditional Chinese Medicine and Ethnic Medicines" with the University of Karachi in Pakistan. Established China's first foreign academician workstation at the university with Pakistani Academician Atta, facilitating clinical trials in Pakistan for three TCM formulations: Yin Huang Qing Fei Capsules, Hou Tou Jian Wei Ling Xiao Shi Tablets, and Gynecological Qian Jin Tablets; Signed multiple cooperation agreements with the Organization of Islamic Cooperation's Permanent Committee for Scientific and Technological Cooperation (COMSTECH); Developed flagship programs including the Ministry of Education's "Ten Thousand Talents Plan—Mainland-Hong Kong/Macao Faculty-Student Exchange Project" and the Taiwan Affairs Office's key exchange initiative "Huxiang Traditional Chinese Medicine Cultural Journey," earning the titles of "National Key University for Hong Kong Educational Exchange" and "National Key University for Taiwan Exchange Programs."



WHAT CAN I STUDY

01 Undergraduate program (Teaching in Chinese)

Program duration: 5 years

- Traditional Chinese Medicine
- Health Maintenance of Traditional Chinese Medicine
- Chinese and Western Clinical Medicine
- Clinical Medicine
- Stomatology
- Acupuncture & Moxibustion and Tuina
- Medical Imaging
- Pediatrics of Traditional Chinese Medicine
- Orthopedics & Traumatology of Traditional Chinese Medicine
- Ophthalmological and Optometric Medicine
- Rehabilitation of Traditional Chinese Medicine

Program duration: 4 years

- English Language
- Business English
- Nursing
- Rehabilitation Therapy
- Exercise Rehabilitation
- Medical Examination Technology
- Public Utilities Management
- Traditional Chinese Pharmacy
- Pharmacy
- Pharmaceutics
- Applied Psychology
- Resource & Development of Traditional Chinese Medicine
- Pharmaceutical Engineering
- Biopharmaceuticals
- Food Science and Engineering
- Medical Information Engineering
- Computer Science & Technology
- Artificial Intelligence
- Medical Insurance
- Elderly Care Service Management

02 Master Degree Program (Teaching in Chinese)

Program duration: 3 years

ENROLLMENT SCHOOL/HOSPITAL	MAJOR	RESEARCH DIRECTION	SUPERVISOR
School of Traditional Chinese Medicine	Basic Theories of Chinese Medicine	Research on the Principles and Methods of Traditional Chinese Medicine Treatment	邓安辉(DENG YIHUI)
	Clinical Foundation of Chinese Medicine	Research on Zhongjing's Thought of Syndrome and Treatment of Miscellaneous Diseases and Application of Classical Prescriptions	肖碧跃 (XIAO BIYUE)
		Research on the Treatment Principles and Methods of Epidemic Febrile Diseases and the Prevention and Treatment of Cardiovascular and Cerebrovascular Diseases	李鑫辉(LI XINHUI)
		Research on Clinical Symptoms and Treatment Principles and Methods of Huanadi Neijing	李花(LI HUA)
		Research on Academic Thought of Shanghan Lun and the Application of Classical Prescriptions	谢雪皎(XIE XUEJIAO)
	Diagnostics of Chinese Medicine	Research on the Diagnosis and Treatment Rules and Essence of Cardiovascular and Cerebrovascular Diseases	莫颖莉(MO YINGLI)
		Theory and Methods of Intelligent Diagnosis and Treatment	梁昊(LIANG HAO)
		Research on TCM Disease Syndrome Diagnosis and Drug Intervention	李杰(LI JIE) 刘旺华(LIU WANGHUA)
	Sub-health in Traditional Chinese Medicine	Research on TCM Weight Management Model and Prevention and Treatment of Obesity-Related Diseases	孙贵香(SUN GUIXIANG)
	School of Medicine	Basic Medicine	Pathology and Pathophysiology
The first Hospital of HNUCM (The First Clinical School of Chinese Medicine)	Ophthalmology and Otorhinolaryngology of Chinese Medicine	Ophthalmology	陈向东(CHEN XIANGDONG)
	Traditional Chinese Pharmacy	Pharmacology and Toxicology of Traditional Chinese Medicine/ Quality Control and Safety Evaluation of Traditional Chinese Medicine	刘红宇(LIU HONGYU)
		Traditional Chinese Pharmacy	龙红萍 (LONG HONGPING)
	Pharmacy	Pharmacy	陈文明(CHEN WENMING) 郭纯(GUO CHUN)
		Internal Medicine of Traditional Chinese Medicine	Research on the Prevention and Treatment of Cardiovascular and Cerebrovascular Diseases with Traditional Chinese Medicine
	Cardiovasology		龙云(LONG YUN) 谢雪皎 (XIE XUEJIAO)
	Neurology		胡华(HU HUA)
	Geriatrics		张稳(ZHANG WEN)
	Critical Care Medicine		易琼 (YI QIONG)
	Surgery of Traditional Chinese Medicine	Andrology	袁铁峰(YUAN YIFENG) 朱文雄(ZHU WENXIONG)
		Dermatology	席建元(XI JIANYUAN)
		Breast Surgery	胡金辉(HU JINHUI)
		Prevention and Treatment of Male Diseases with Traditional Chinese Medicine	周青(ZHOU QING)
		Burn and Ulcer Plastic Surgery	禹忠志 (ZHOU ZHONGZHI) 黄新灵(HUANG XINLING)

ENROLLMENT SCHOOL/HOSPITAL	MAJOR	RESEARCH DIRECTION	SUPERVISOR
The first Hospital of HNUCM (The First Clinical School of Chinese Medicine)	Traditional Chinese Orthopedics and Traumatology	Limb and Joint	邝高艳 (KUANG GAOYAN) 严可(YAN KE)
	Ophthalmology and Otorhinolaryngology of Chinese Medicine	Ophthalmology	陈向东(CHEN XIANGDONG)
	Clinical Integration of Chinese and Western Medicine	OncologyNeurosurgery	田雪飞(TIAN XUEFEI) 邓梨平(DENG LIPING) 余文运 (YU WENYUN) 石文英(SHI WENYING)
	Acupuncture and Moxibustion	Acupuncture- moxibustion and Tuina	曹越(CAO YUE) 潘江(PAN JIANG)
The Second Hospital of HNUCM (The Second Clinical School of Chinese Medicine)	Traditional Chinese Pharmacy	Research on the Pharmacodynamic Mechanism of Traditional Chinese Medicine and Characteristic Traditional Chinese Medicine Preparations	邓桂明(DENG GUIMING)
	Intern Medicine of Traditional Chinese Medicine	Cardiovascular and Cerebrovascular Medicine	李鑫辉(LI XINHUI)
	Surgery of Traditional Chinese Medicine	Dermatology	朱明芳(ZHU MINGFANG)
		Proctology	王真权 (WANG ZHENQUAN)
	Orthopedics of Traditional Chinese Medicine	Orthopedics	张申尧(ZHANG SHENYAO)
Clinical Integration of Chinese and Western Medicine	Urology	周浩 (ZHOU HAO)	
School of Acupuncture-moxibustion, Tuina and Rehabilitation	Acupuncture-moxibustion and Tuina	Clinical and Mechanism Research of Acupuncture and Moxibustion therapy	刘密 (LIU MI)
School of Integrated Chinese and Western Medicine	Clinical Integration of Chinese and Western Medicine	Research on Prevention and Treatment of Tumor with Integrated Chinese and Western Medicine	田雪飞 (TIAN XUEFEI)
		Research on the Prevention and Treatment of Surgical Diseases with Integrated Traditional Chinese and Western Medicine	刘钰(LIU YU)
School of Nursing	Nursing	Nursing	罗尧岳(LUO YAOYUE)
			陈偶英(CHEN OUYING)
			蒋小剑(JIANG XIAOJIAN)
			秦莉花(QIN LIHUA)
			潘晓彦(PAN XIAOYAN)
			李春艳 (LI CHUNYAN)
			吉彬彬 (JI BINBIN)
	Nursing	Nursing	罗尧岳(LUO YAOYUE)
			陈偶英(CHEN OUYING)
			蒋小剑(JIANG XIAOJIAN)
			潘晓彦(PAN XIAOYAN)
			秦莉花(QIN LIHUA)
			何娅娜 (HE YANA)
			刘花艳(LIU HUAYAN)
张湘彦(ZHANG XIANGYAN)			
李春艳 (LI CHUNYAN)			
吉彬彬 (JI BINBIN)			

ENROLLMENT SCHOOL/HOSPITAL	MAJOR	RESEARCH DIRECTION	SUPERVISOR
School of Pharmacy	Pharmacy	Pharmaceutical Chemistry	周旭东(ZHOU XUDONG) 王炜(WANG WEI) 李斌(LI BIN)
		Pharmaceutics	刘文龙(LIU WENLONG) 张喜利(ZHANG XILI) 贺福元(HE FUYUAN) 覃丽(QIN LI)
	Traditional Chinese Pharmacy	Pharmacology	杜可(DU KE) 余黄合(YU HUANGHE) 董巧珍(TONG QIAOZHEN) 刘湘丹(LIU XIANGDAN)
		Science of Traditional Chinese Medicine Resources	颜红(YAN HONG)
		Research on Pharmaceutics of Traditional Chinese Medicine	石璧莲(SHI BILIAN) 林丽美(LIN LIMEI) 夏伯候(XIA BOHOU)
		Research on Traditional Chinese Medicine Processing Analysis Science of Chinese Meteria Medica	裴刚(PEI GANG)
	Pharmacy	Research on the Active Ingredients and Mechanisms of Action in Traditional Chinese Medicine	李娟 (LI JUAN)
		Research on the Material Basis and Mechanism of Action of Traditional Chinese Medicine	周旭东(ZHOU XUDONG) 覃丽(QIN LI) 余黄合(YU HUANGHE) 杜可(DU KE)
		Industrial Pharmacy	朱伟(ZHU WEI)
		Clinical Pharmacy	
Hunan Academy of Chinese Medicine	Acupuncture and Moxibustion	Acupuncture- moxibustion and Tuina	朱伟(ZHU WEI)
Academy of Chinese Medical Sciences (Science & Technology Innovation Center)	Basic Theories of Integrated Chinese and Western Medicine	Basic Research on Integrative Chinese and Western Medicine for Cardiovascular and Cerebrovascular Diseases	梅志刚(MEI ZHIGANG)
	Clinical Integration of Chinese and Western Medicine	Integrated Chinese and Western Medicine to Prevent and Treat Cardiovascular and Cerebrovascular Diseases	梅志刚(MEI ZHIGANG)
		Research on Integrated Traditional Chinese and Western Medicine for the Prevention and Treatment of Pulmonary Diseases	李玲 (LI LING)
	Pharmacy	Pharmacology	覃丽 (QIN LI)
Traditional Chinese Pharmacy	Pharmacology of Traditional Chinese Medicine	覃双林 (QIN SHUANGLIN)	
School of Humanities and Management	Traditional Chinese Medicine Culture	Cross-cultural Communication of Traditional Chinese Medicine	刘江 (LIU JIANG) 丁颖 (DING YING)
	Pharmaceutical Economics and Management	Pharmaceutical Economics and Policy	夏新城 (XIA XINBIN)
	Master of Public Administration	Health Economics and Public Management of Hospital	刘萍 (LIU PING)
	Applied Psychology	Health Economics and Policy	夏新城 (XIA XINBIN)
School of Stomatology	Stomatology	Research on the Applied Psychology	张湘彦(ZHANG XIANGYAN)
		General Dentistry	李明 (LI MING)

Program duration: 3 years

ENROLLMENT SCHOOL/HOSPITAL	MAJOR	RESEARCH DIRECTION	SUPERVISOR
School of Humanities and Management	Traditional Chinese Medicine Management	Economics and Policies of Traditional Chinese Medicine	夏新斌 (XIA XINBIN)
	Basic Theories of Chinese Medicine	Research on the Principles and Methods of Traditional Chinese Medicine Treatment	邓奕辉 (DENG YIHUI)
School of Traditional Chinese Medicine	Clinical Foundation of Chinese Medicine	Research on the Treatment Principles and Methods of Epidemic Febrile Diseases and the Prevention and Treatment of Cardiovascular and Cerebrovascular Diseases	李鑫辉 (LI XINHUI)
		Research on Academic Thought of Shanghai Lun and the Application of Classical Prescriptions	谢雪皎 (XIE XUEJIAO)
		Research on the Diagnosis and Treatment Rules and Essence of Cardiovascular and Cerebrovascular Diseases	刘旺华 (LIU WANGHUA)
	Diagnostics of Chinese Medicine	Theory and Methods of Intelligent Auxiliary TCM Diagnosis	梁昊 (LIANG HAO)
		Research on Syndrome Essence of Cardiovascular Disease and Intervention of Traditional Chinese Medicine	李杰 (LI JIE)
	Traditional Chinese Medicine Nursing	Research on Intelligent Diagnosis and Management of Tumor Diseases with TCM	罗尧岳 (LUOYAOYUE)
		Research on Traditional Chinese Medicine Nursing and Intervention of Traditional Chinese Medicine of Cerebrovascular Diseases	姜莉花 (JIANG LIHUA)
		Study on TCM Nursing and Traditional Chinese Medicine Intervention in Cardiovascular Diseases	陈偶英 (CHEN OUYING)
		Mental Health and Chronic Disease Management	蒋小剑 (JIANG XIAOJIAN)
		Traditional Chinese Medicine in the Prevention and Treatment of Dermatological Sexually Transmitted Diseases/Prevention and Treatment of Male Diseases with Traditional Chinese Medicine	周青 (ZHOU QING)
The First Hospital of HNUCM (The First Clinical School of Chinese Medicine)	Surgery of Traditional Chinese Medicine	Research on the Prevention and Treatment of Cardiovascular and Cerebrovascular Diseases with Traditional Chinese Medicine	刘建和 (LIU JIANHE)
		Research on Chinese Medicine Prevention and Treatment of Neurological Diseases	胡华 (HU HUA)
		Research on the Prevention and Treatment of Cardiopulmonary and Vascular Diseases with Traditional Chinese Medicine and Innovative Drugs	张稳 (ZHANG WEN)
	Internal Medicine of Traditional Chinese Medicine (Professional Degree)	Research on the Prevention and Treatment of Cardiovascular and Cerebrovascular Diseases with Traditional Chinese Medicine	谢雪皎 (XIE XUEJIAO)
		Traditional Chinese Medicine in the Prevention and Treatment of Dermatological Sexually Transmitted Diseases/Prevention and Treatment of Male Diseases with Traditional Chinese Medicine	周青 (ZHOU QING)
		Traditional Chinese Medicine for the Prevention and Treatment of Skin Diseases	崔建元 (CUI JIANYUAN)
	Surgery of Traditional Chinese Medicine (Professional Degree)	Traditional Chinese Medicine in the Prevention and Treatment of Dermatological Sexually Transmitted Diseases/Prevention and Treatment of Male Diseases with Traditional Chinese Medicine	周青 (ZHOU QING)
		Traditional Chinese Medicine for the Prevention and Treatment of Skin Diseases	崔建元 (CUI JIANYUAN)
	Ophthalmology and Otorhinolaryngology of Chinese Medicine (Professional Degree)	Ophthalmology	陈向东 (CHEN XIANGDONG)

ENROLLMENT SCHOOL/HOSPITAL	MAJOR	RESEARCH DIRECTION	SUPERVISOR
The Second Hospital of HNUCM (The Second Clinical School of Chinese Medicine)	Internal Medicine of Traditional Chinese Medicine (Professional Degree)	Research on the Prevention and Treatment of Cardiovascular and Cerebrovascular Diseases with Traditional Chinese Medicine	李鑫辉 (LI XINHUI)
	Surgery of Traditional Chinese Medicine (Professional Degree)	Dermatology Traditional Chinese Medicine for the Prevention and Treatment of Anorectal Diseases	朱明芳 (ZHU MINGFANG) 王真权 (WANG ZHENQUAN)
	Traditional Chinese Pharmacy	Research on the Pharmacodynamic Mechanism of Traditional Chinese Medicine and Characteristic Traditional Chinese Medicine Preparations	邓桂明 (DENG GUIMING)
School of Acupuncture-moxibustion, Tuina and Rehabilitation	Acupuncture-moxibustion and Tuina	Clinical and Mechanism Research of Acupuncture and Moxibustion Therapy	刘惠 (LIU HUI)
School of Integrated Chinese and Western Medicine	Basic Theories of Integrated Chinese and Western Medicine	Research on the Medicinal Substances, Compatibility Principles and Pharmacological Mechanisms of Traditional Chinese Medicine and Compound Prescriptions/Research on Prevention and Treatment of Cardiovascular and Cerebrovascular Diseases, Thrombosis and Hemostasis	梅志刚 (MEI ZHIGANG)
		Research on Screening of Antitumor Components in Traditional Chinese Medicine and Targeted Delivery Systems/ Gut Microbiota and Tumor Pathogenesis: Integrated Chinese and Western Medicine Prevention and Treatment	田雪飞 (TIAN XUEFEI)
		Research on Integrated Traditional Chinese and Western Medicine for the Prevention and Treatment of Infectious Diseases	李玲 (LI LING)
		Research on Screening of Antitumor Components in Traditional Chinese Medicine and Targeted Delivery Systems/ Gut Microbiota and Tumor Pathogenesis: Integrated Chinese and Western Medicine Prevention and Treatment	田雪飞 (TIAN XUEFEI)
		Research on the Medicinal Substances, Compatibility Principles and Pharmacological Mechanisms of Traditional Chinese Medicine and Compound Prescriptions/ Research on Prevention and Treatment of Cardiovascular and Cerebrovascular Diseases, Thrombosis and Hemostasis	梅志刚 (MEI ZHIGANG)
	Clinical Integration of Chinese and Western Medicine (Academic Degree)	Research on the Medicinal Substances, Compatibility Principles and Pharmacological Mechanisms of Traditional Chinese Medicine and Compound Prescriptions/ Research on Prevention and Treatment of Cardiovascular and Cerebrovascular Diseases, Thrombosis and Hemostasis	梅志刚 (MEI ZHIGANG)
		Research on Screening of Antitumor Components in Traditional Chinese Medicine and Targeted Delivery Systems/ Gut Microbiota and Tumor Pathogenesis: Integrated Chinese and Western Medicine Prevention and Treatment	田雪飞 (TIAN XUEFEI)
		Research on the Medicinal Substances, Compatibility Principles and Pharmacological Mechanisms of Traditional Chinese Medicine and Compound Prescriptions/ Research on Prevention and Treatment of Cardiovascular and Cerebrovascular Diseases, Thrombosis and Hemostasis	梅志刚 (MEI ZHIGANG)
		Research on Screening of Antitumor Components in Traditional Chinese Medicine and Targeted Delivery Systems/ Gut Microbiota and Tumor Pathogenesis: Integrated Chinese and Western Medicine Prevention and Treatment	田雪飞 (TIAN XUEFEI)
		Research on the Medicinal Substances, Compatibility Principles and Pharmacological Mechanisms of Traditional Chinese Medicine and Compound Prescriptions/ Research on Prevention and Treatment of Cardiovascular and Cerebrovascular Diseases, Thrombosis and Hemostasis	梅志刚 (MEI ZHIGANG)
School of Pharmacy	Traditional Chinese Pharmacy	Research on Screening of Antitumor Components in Traditional Chinese Medicine and Targeted Delivery Systems/ Gut Microbiota and Tumor Pathogenesis: Integrated Chinese and Western Medicine Prevention and Treatment	田雪飞 (TIAN XUEFEI)
		Stomatology	李明 (LI MING)
		Research on Systematic Biology and Quality Innovation of Chinese Medicine	林丽美 (LIN LIMEI)
		Research and Development of Natural Medicines	王炜 (WANG WEI)
		Preparation and Quality of Traditional Chinese Medicine	李斌 (LI BIN)
		Research on Chinese Medicine for Prevention and Treatment of Cardiovascular and Cerebrovascular Diseases	刘文龙 (LIU WENLONG)
		Research on Modern Theory/technology and Methods of Medicinal Properties, Pharmacology, Pharmaceutics of Chinese Materia Medica by Supramolecular Chemistry	侯慧慧 (HOU HUIHUI)
		Research on Chinese Medicine for the Prevention and Treatment of Tumor and Cardiovascular Diseases	樊福元 (FAN FUYUAN)
		Science of Traditional Chinese Medicine Resources	覃丽 (QIN LI)
		Research on the Active Ingredients and Mechanisms of Action in Traditional Chinese Medicine	刘湘丹 (LIU XIANGDAN) 董巧珍 (DONG QIAOZHEN)
Academy of Chinese Medical Science (Science & Technology Innovation Center)	Traditional Chinese Pharmacy	Research on Chinese Medicine for the Prevention and Treatment of Tumor and Cardiovascular Diseases	裴刚 (PEI GANG)
		Research on Chinese Medicine for the Prevention and Treatment of Tumor and Cardiovascular Diseases	覃丽 (QIN LI)

04 Doctoral Degree Program (Teaching in English)

Program duration: 3 years

ENROLLMENT SCHOOL/HOSPITAL	MAJOR	
School of Pharmacy	Traditional Chinese Pharmacy	For specific research areas, supervisor information, and application documents, please contact the Admissions Office.

APPLICATION REQUIREMENTS

01 Undergraduate Program

Admission Requirements

- 1.Non-Chinese citizen
- 2.High school graduate
- 3.18-30 years of age
- 4.Healthy

Application Documents

- 1.Photocopy of passport identification page (Passports must have a validity of at least 6 months from the date of submission of the application)
- 2.Photocopy of high school or above graduation diploma and transcripts in Chinese or English. If the document is in a language other than Chinese or English, a translation and notarization is required
- 3.Chinese proficiency certificate (HSK4 or above)
- 4.Non-criminal record certificate (valid within 6 months)
- 5.Physical examination form (valid within 6 months)
- 6.Interview video
- 7.Psychological assessment
- 8.Other required documents

02 Master's Program

Admission Requirements

- 1.Non-Chinese citizen
- 2.Awarded bachelor degree or above
- 3.18 years old or above
- 4.Two recommendation letters from two associate professors or professors
- 5.Healthy

Application Documents

- 1.Photocopy of passport identification page (Passports must have a validity of at least 6 months from the date of submission of the application)
- 2.Photocopy of bachelor's degree, diploma and transcripts in Chinese or English. If the document is in a language other than Chinese or English, a translation and notarization is required;
- 3.Chinese proficiency certificate (HSK4 or above)
- 4.Personal resume
- 5.Two recommendation letters from two associate professors or professors
- 6.Research proposal
- 7.Non-criminal record certificate (valid within 6 months)
- 8.Physical examination form (valid within 6 months)
- 9.Interview video
- 10.Psychological assessment
- 11.Other required documents



03 Doctoral Program

Admission Requirements

1. Non-Chinese citizen
2. Awarded master's degree or above
3. 18 years old or above
4. Two recommendation letters from two associate professors or professors
5. Healthy

Application Documents

1. Photocopy of passport identification page (Passports must have a validity of at least 6 months from the date of submission of the application)
2. Photocopy of master's degree, diploma and transcripts in Chinese or English. If the document is in a language other than Chinese or English, a translation and notarization is required;
3. Chinese Proficiency Certificate (HSK4 or above)
4. Personal resume
5. Two recommendation letters from two associate professors or professors
6. Research proposal
7. Non-criminal record certificate (valid within 6 months)
8. Physical examination form (valid within 6 months)
9. Interview video
10. Psychological assessment
11. Other required documents

04 Language program

Admission Requirements

1. Non-Chinese citizen
2. High school graduate
3. 18 years old or above
4. Healthy

Application Documents

1. Photocopy of passport identification page (Passports must have a validity of at least 6 months from the date of submission of the application)
2. Photocopy of high school or above graduation diploma and transcripts in Chinese or English. If the document is in a language other than Chinese or English, a translation and notarization is required;
3. Non-criminal Record Certificate (valid within 6 months)
4. Physical Examination Form (valid within 6 months)
5. Interview video
6. Psychological assessment
7. Other required documents





STUDY COST

SCHOLARSHIPS

01 Hunan Provincial Scholarship for Chinese Language Learning Students from Belt & Road Partner Countries

Funding students: Chinese language students. Chinese language students whose nationality are from a Belt and Road partner countries

Funding standard: 15,000 RMB/year (tuition and accommodation fees can be covered).

Funding period: One academic year.

Selection Criteria: 1. Selected by online interview; 2. Priority will be given to those who have basic Chinese language skills.

02 Admission Scholarship of International Education Institute in Hunan University of Chinese Medicine

Funding students: students applying for undergraduates (except students majoring in clinical medicine), master and doctoral programs of Hunan University of Chinese Medicine.

Funding standard:

Undergraduate program:

11,300 RMB (covering half of the tuition and accommodation fees for the first year).

Master's program:

(1) Full scholarship: 25,600 RMB (covering tuition and accommodation fees for the first year);
(2) Half scholarship: 12,800 RMB (covering half of the tuition and accommodation fees for the first year).

Doctoral program:

34,600 RMB (covering tuition and accommodation fees for the first year) + living allowance of 3,000 RMB /month for the first year (12 months in total).

Funding period: First academic year.

Selection Criteria:

1. Selected by online interview; 2. Excellent Chinese language proficiency is preferred; 3. Bachelor's degree applicants studying Chinese medicine are preferred; 4. Master's and doctoral program applicants with significant research accomplishments are preferred.

Accommodation fee	
	2,600 RMB per year for a triple room in Hanpu campus
	6,000 RMB per year for a double room in Dongtang campus
	10,500 RMB per year for a single room in Dongtang campus
<small>(Accommodation will be arranged by the school according to the student's learning needs)</small>	

Insurance fee	
FEE	800RMB per year

Tuition fee	
Undergraduate program	20,000 RMB per year
Master Degree program	23,000 RMB per year
Doctoral Degree program	32,000 RMB per year
Chinese Language program	15,000 RMB per year

Residence permit application fee	
FEE	about 800RMB per year

03 Hunan Provincial Scholarship for International Degree Students

Funding students: Full-time undergraduate, master's, and doctoral students enrolled at Hunan University of Chinese Medicine.

Funding standard:

Undergraduate program: 15,000 yuan per year;

Master's program: 20,000 yuan per year;

Doctoral program: 25,000 yuan per year.

Funding Period: From the second academic year.

Selection Criteria: Selection is made on the basis of merit according to the results of a comprehensive assessment and academic performance.



04 Scholarships for International Chinese Language Teachers (One-Semester Study Program)

Funding students:

1. Non-Chinese citizens.
2. Friendly toward China, with no criminal record, and committed to complying with Chinese laws, regulations, and institutional rules.
3. Physically and mentally healthy, with excellent academic and behavioral records.
4. Aspiring to pursue a career in Chinese language education, teaching, or related fields.
5. Aged 18–35 (as of September 1, 2026). Age limits may extend to 45 for in-service Chinese language teachers. Undergraduate scholarship applicants are generally required to be under 25.

Funding standard: Covering tuition and accommodation fees. Providing living allowance of RMB 2,500/month, and comprehensive medical insurance premium of RMB 400/person.

Selection Criteria: 1. Valid HSK certificate (issued within the past two years);

2. Applicants with valid HSKK certificates (issued within the past two years) are preferred.

Application method: Apply through the Confucius Institute or HSK Test Center in your home country.



CAMPUS LIFE



CAMPUS LIFE



The university has international student dorms on campus, all are equipped with air conditioners, water heaters, private washing rooms, balconies, and basic furniture. We have 24-hour security services, modern classrooms, entertainment rooms, canteens, meeting rooms & coffee bars on the first floor.



HOW TO APPLY

Online application: <https://hnu cm.at0086.cn/StuApplication/Login.aspx>

On-site application: Admissions Office, International Education Institute, Hunan University of Chinese Medicine, No. 300 Xueshi Road, Yuelu District, Changsha, Hunan Province.

Application period: March 1st, 2026 to June 15th, 2026

Tel: 0086-0731-88458265

Postal Code: 410208

E-mail: ieizs@hnu cm.edu.cn

Website: <https://gjy.hnu cm.edu.cn/>